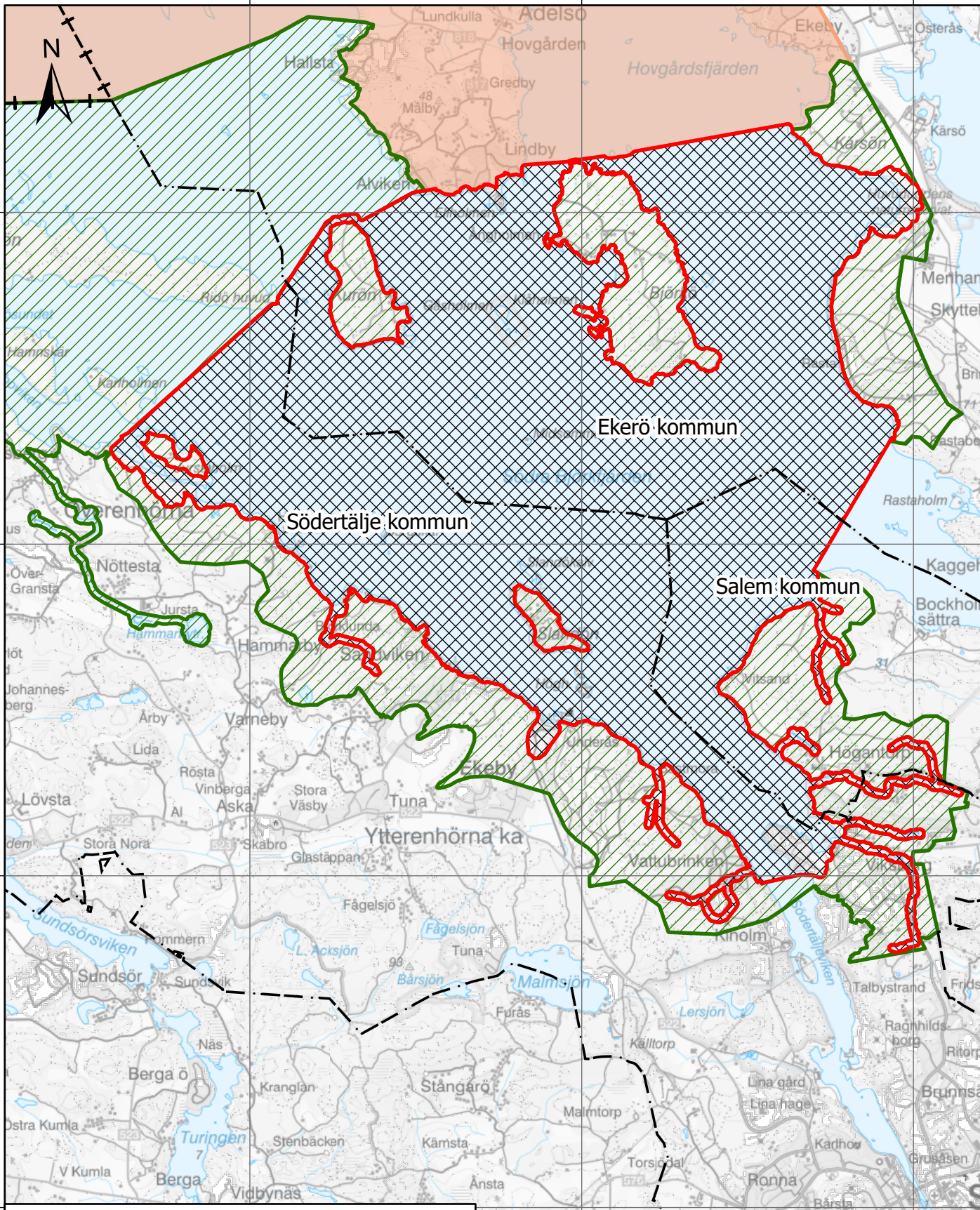





640000

645000

650000

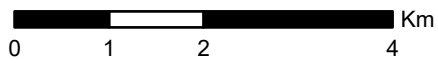


Skydds-zoner

-  Primär zon, inkl. strandzon 50 m (utom Björkö), HW10
-  Sekundär zon, inkl. strandzon 100 m, HW10
-  Tertiär zon, inkl. strandzon 100 m, HW10

VATTENSKYDDSSOMRÅDE SÖDRA MÄLAREN
DETALJ

Format: A4
 Skala: 1:80 000
 Koordinatsystem: Sweref99 TM
 Datum: 2024-04-19



640000

645000

650000